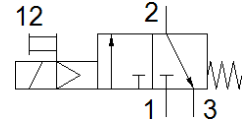
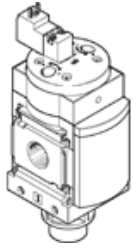


on-off valve MS6-EE-1/2-10V24

Número de artículo: 542582

FESTO



[PDF Condiciones de servicio generales](#)

[→ Portal de Soporte técnico](#)

Hoja de datos, fiabilidad del producto

La información de esta "Hoja de datos de fiabilidad del producto" se fundamenta en el uso previsto del producto. Incluye el cumplimiento de todas las especificaciones, p. ej., de la hoja de datos, el catálogo, la documentación de usuario y las condiciones generales de funcionamiento. Es exclusivamente el usuario quien se responsabiliza de determinar si un producto se adecúa a una determinada aplicación.

Característica	Valor
Well-trieed component ¹⁾	Yes
Common Cause Failure (CCF) measures ²⁾	Safely keep operating pressure within the limits of the technical specifications Observe compressed air quality Comply with maximum vibration and shock loads Comply with ambient temperature and temperature of medium
Service-life value B ₁₀ ³⁾	0,35 Mio SP
Design characteristics	Piloted piston spool No overlapping
Vibration resistance	Transport application test with severity level 2 in accordance with FN942017-4 and EN 60068-2-6
Shock resistance	Shock test with severity level 2 in accordance with FN 942017-5 and EN 60068-2-27

- 1) The product is a well-trieed product for a safety-related application according to ISO 13849-1. The relevant basic and well-trieed safety principles according ISO 13849-2 for this product are fulfilled. The suitability of the product for a precise application must be verified and confirmed by the user.
- 2) CCF measures have to be verified for the precise application. Therefore, the list with measures is not meant to be exhaustive.
- 3) The ascertainment of characteristic service life values is generally based on the ISO 19973 "Pneumatic fluid power - Assessment of component reliability by testing". Additional, B₁₀ values of 10 million cycles can also be based on the ISO 13849.